

GC-655 Series

GC-655N-G

1/4", x23 Zoom, 470TVL, DC12V, RS-232, NTSC

GC-655P-G

1/4", x23 Zoom, 450TVL, DC12V, RS-232, PAL

GC-655N-VR-G

1/4", x23 Zoom, 470TVL, DC12V, RS-422, NTSC

GC-655P-VR-G

1/4", x23 Zoom, 450TVL, DC12V, RS-422, PAL

GC-655NX-VR

1/4" Ex-View, , x23 Zoom, 470TVL, DC12V, RS-422, NTSC

GC-655PX-VR

1/4" Ex-View, x23 Zoom, 450TVL, DC12V, RS-422, PAL

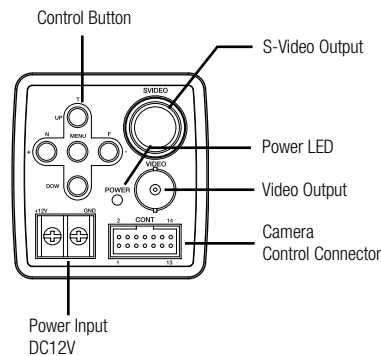


Built-in Optical Zoom Lens

KEY FEATURES

- Built-in x23 Optical Zoom Lens (Maximum x184 with digital zoom)
- Excellent Auto focus tracking (Auto / One shot / Manual mode)
- Remote Control through RS-232C / RS-485 / RS-422 Interface (Maximum 99 of GC-655 can be remote controlled by HTX-2500, HTX-3000, HTX-4000 Controllers)
- True Color Reproduction through various White Balance Mode
- External Synchronization (VD Pulse Lock) Support
- 64 Position Preset

CONNECTIONS

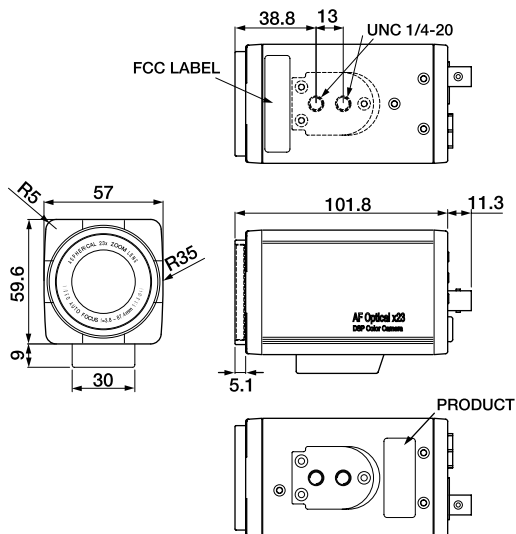


PIN Configuration	
PIN No	Description
1	Key1
2	Key2
3	Zoom
4	Focus
5	Menu
6	COM
7	GND
8	GND
9	R+/NC
10	R-/RD
11	T+/TD
12	T-/GND
13	EXT_VD
14	GND

SPECIFICATIONS

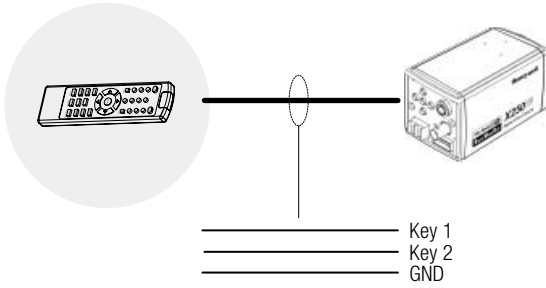
Model No.	GC-655N(X)	GC-655P(X)
Pick-up Device	1/4" Sony Super HAD CCD, 410k Pixels (GC-655N/P)	1/4" Sony EX-view CCD, 410k Pixels (GC-655NX/PX)
Effective Pixel	768(H) x 494(V)	752(H) x 582(V)
Television System	NTSC, 525 TV Lines, 2:1 Interlace	PAL, 625 TV Lines, 2:1 Interlace
Sync. System	Internal / External (VD pulse lock)	
Horizontal Resolution	470 TV Lines	450 TV Lines
Minimum Illumination	1.0 lx (30 IRE)	
Shutter Speed	1/60 - 1/10k (28 Steps)	1/50 - 1/10k (28 Steps)
S/N Ratio	More than 49dB (AGC off)	
AGC	High / Medium / Low	
White Balance	ATW / AWC / Indoor / Outdoor / MWB	
BLC	ON / OFF / Auto (5Area Adjustable)	
Video Output	Composite (1.0Vp-p), 75 Ω / S-VHS Output	
Lens	Focal Length f = 3.8 ~ 87.4 mm Zoom rate : x23 (x24 ~ x184 : x8 Digital Zoom) F 1.6 (Wide) ~ F 3.8 (Tele)	
On Screen Display	ON / OFF	
Remote Control	RS-232C (option RS-422, RS-485)	
Power Source	DC12V ± 1V (Constant Voltage)	
Power Consumption	Maximum 4.5W	
Connector	Video Output BNC S-VHS Output Connector	
Operating Temperature	-5°C ~ 60°C (Recommended -5°C ~ 50°C)	
Storage Temperature	-10°C ~ 60°C	
Operating Humidity	90 % RH (non-condensing)	
Camera Mount	Locking holder	
Material	Aluminum	
Color	Light Gray	
Weight	410g	
Dimensions	57(W) x 59.6(H) x 101.8(D) mm	
Certification	FCC (GC-655N), CE (GC-655P)	

DIMENSIONS

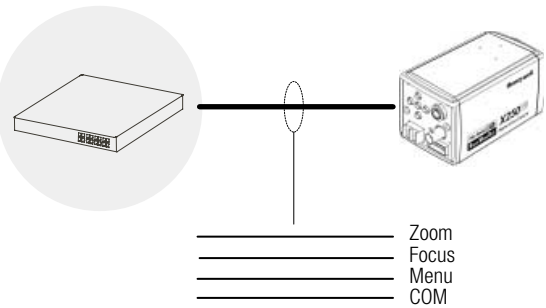


(Unit : mm)

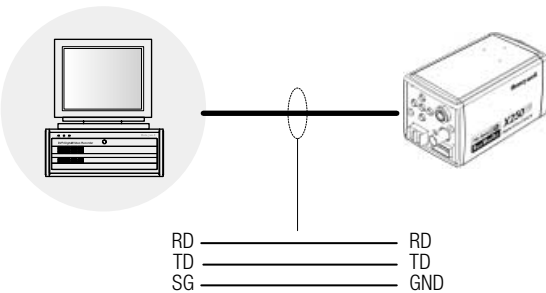
Wired remote controller



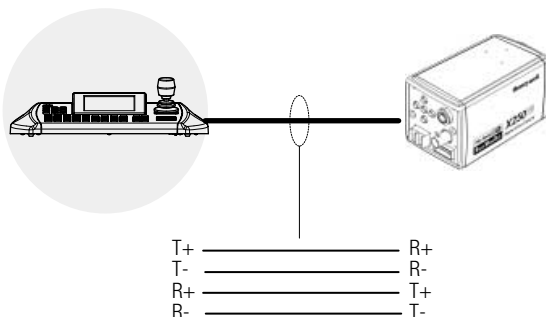
Direct wire PTZ controller



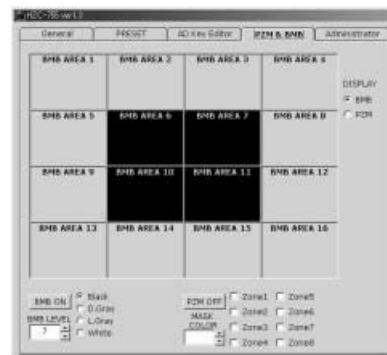
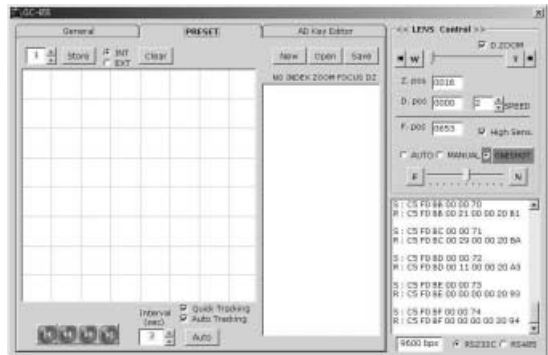
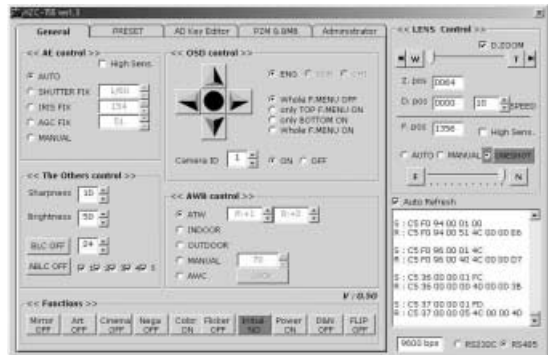
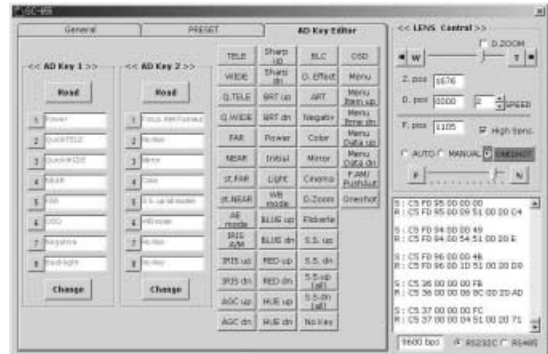
Through RS-232



Through RS-422



Sample Program



XGA SOLUTION

CAMERA

HOME

LENS

DVR

MONITOR & ACCESSORIES